



UNITED REPUBLIC OF TANZANIA

POPULATION: 58 MILLION



World Health Organization

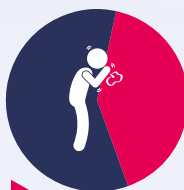
WHO GLOBAL TB REPORT 2020

2019

137 000 FELL ILL WITH TB (65 000 – 237 000)

men 56% women 29% children 15%

81 000 people with TB notified (new and relapse)

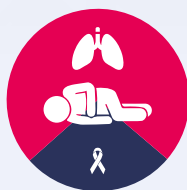


56 000 people not notified or not diagnosed

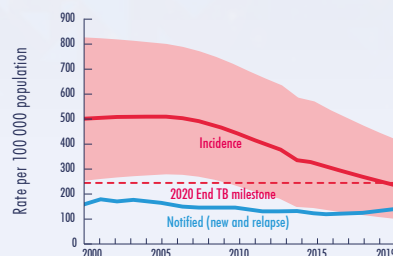
32 000 TB DEATHS

(19 000 – 48 000)

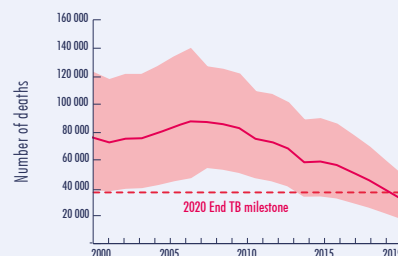
including 12 000 deaths among people with HIV



TB INCIDENCE 2000-2019

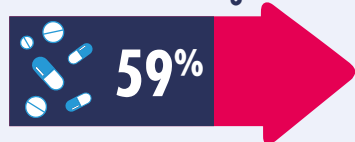


TB MORTALITY 2000-2019
(EXCLUDES PEOPLE WITH HIV)



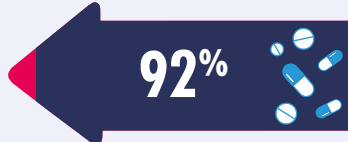
TREATMENT

TB treatment coverage



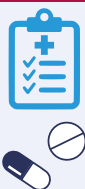
2025
90%
End TB
operational
target

Treatment success rate



DRUG-RESISTANT TB

Estimate **1 700**
(590 – 3 400)
people fell ill
with drug-resistant TB



534
laboratory confirmed
518
started on
second-line treatment

TB/HIV

33 000
(15 000 – 56 000)
people living with HIV
fell ill with TB



19 161
notified
18 839
notified and on
antiretroviral treatment

TB PREVENTIVE TREATMENT

6%
HIV-positive people
(newly enrolled
in care) on TB
preventive treatment

39%
7 917 children
(aged <5 years) household
contacts of bacteriologically confirmed TB
cases on TB preventive treatment

Data not available
(aged > 5 years) household
contacts of bacteriologically
confirmed TB cases
on TB preventive treatment*

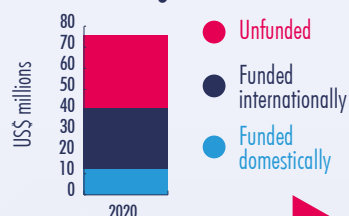
TB CATASTROPHIC COSTS

Year of survey: 2019

45%
TB patients facing
catastrophic total costs

TB FINANCING 2020

National TB budget US\$ 76 million



TB-SDG MONITORING FRAMEWORK

Population living below the
international poverty line
(% of population)

49%

Household health
expenditure >10% of
total expenditure/income
(% of population)

3.8%

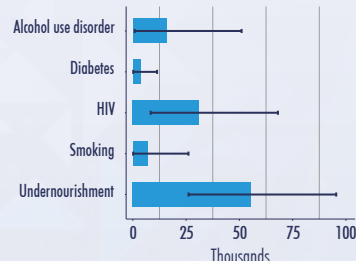
UHC index of essential
service coverage

43

Population covered
by social protection
floors/systems
(% of population)

13%

**Number of TB
cases attributable
to 5 risk factors**



Monitoring of the above indicators can be used to identify key influences on the TB epidemic at national level and inform the multisectoral actions required to end TB.

* Total number of eligible contacts aged ≥5 years not available by country